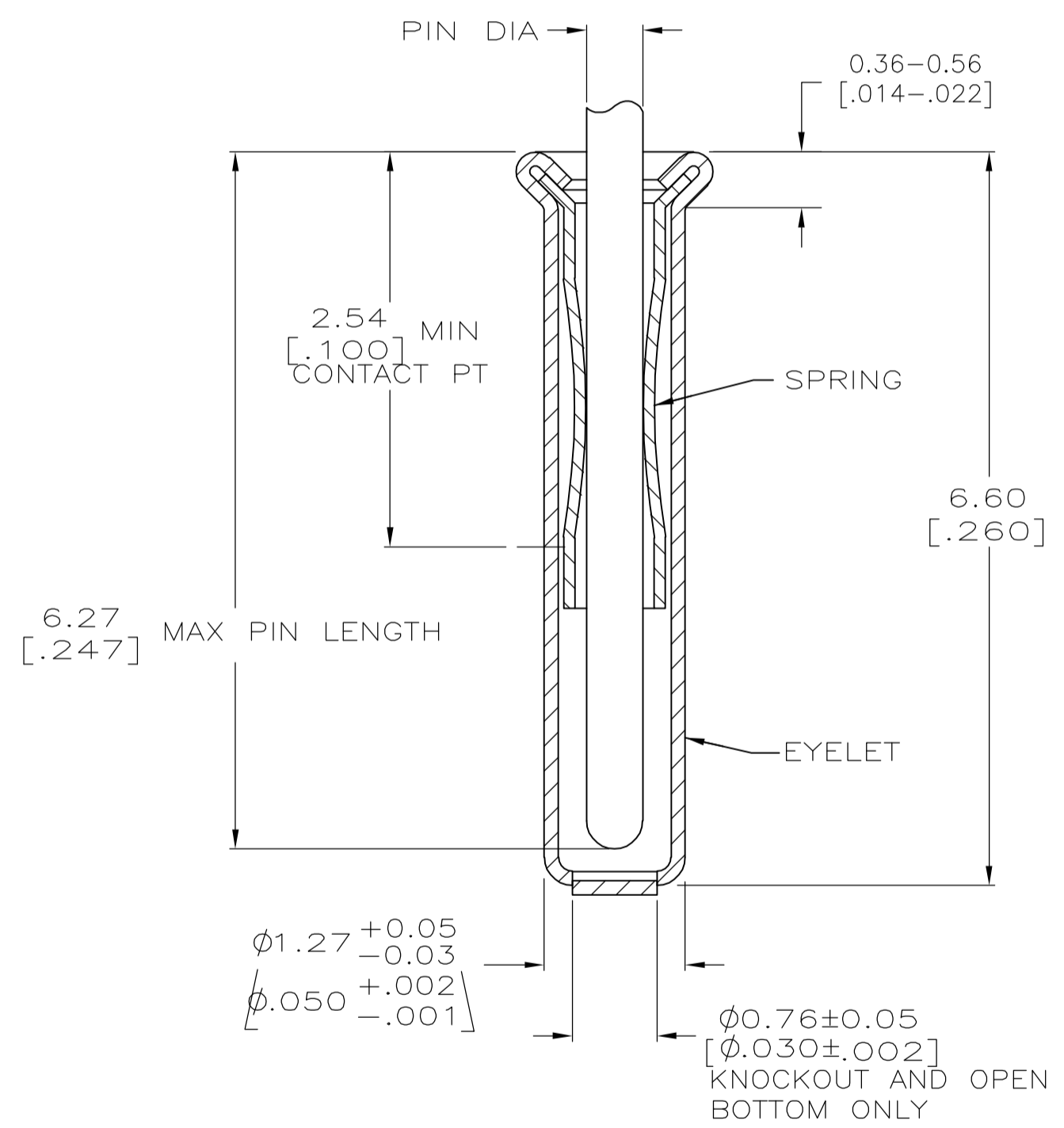
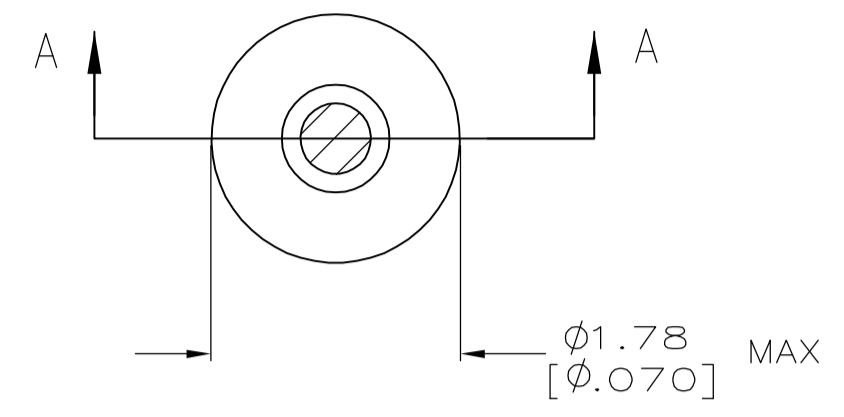


THIS DRAWING IS UNPUBLISHED. RELEASED FOR PUBLICATION
 © COPYRIGHT BY TYCO ELECTRONICS CORPORATION. ALL RIGHTS RESERVED.

LOC	DIST	REVISIONS			
P	LTR	DESCRIPTION	DATE	DWN	APVD
FT	64	Z2	REVISED PER ECO-06-018765	13APR07	DH DB



SECTION A-A

- 1. TIN PER MIL-T-10727 OR TIN LEAD 0.00254 [.000100] MIN THK.
- 2. GOLD PER MIL-G-45204, TYPE II, 0.00076 [.000030] MIN THK OVER NICKEL PER QQ-N-290 0.00028 [.000011] MIN THK ON CONTACT AREA.
- 3. GOLD FLASH PER MIL-G-45204, TYPE II, 0.13 μ m [.000005] MIN THK. OVER NICKEL PLATE PER QQ-N-290 0.51 μ m-1.52 μ m [.000020-.000060] EXT THK.
- 4. RECOMMENDED HOLE SIZE, PLATED OR UNPLATED:
 MACHINE INSERTION: $1.32 +0.03$ / -0.05 [$.052 +.001$ / $-.002$]
 HAND INSERTION: $1.32 +0.10$ / -0.00 [$.052 +.004$ / $-.000$]
- 5. APPLICATION TOOL PART NUMBER:
 MACHINE NO. 682127-3
 INSERTION HEAD NO. 682039-2
- 6. TO INSURE PROPER SPRING TENSION DO NOT EXCEED A 0.10 [.004] DIFFERENCE IN PIN DIA WHEN CHANGING TO A SMALLER PIN.
- 7. BOTTOM PLUG KNOCKOUT TOOL PART NUMBER 69729 WITH TIP PART NUMBER 69728.

OBSOLETE	CLOSED KNOCKOUT	0.36-0.66 [.014-.026]	TIN 1	TIN 1	50863-8	
						50863-7
OBSOLETE	OPEN					50863-6
OBSOLETE	CLOSED			GOLD 3	GOLD 2	50863-5
OBSOLETE	KNOCKOUT			TIN 1		50863-4
OBSOLETE	OPEN			TIN 1		50863-3
			GOLD 3		50863-1	
			EYELET	SPRING	50863	
			FINISH		PART NO	

THIS DRAWING IS A CONTROLLED DOCUMENT.

DWN	R. TALLEY	4-8-91	Tyco Electronics Corporation Harrisburg, PA 17105-3608
CHK	S. ROBERTSON	8-22-91	
APVD	R. MILLER	8-5-91	
PRODUCT SPEC			
DIMENSIONS: mm [INCHES] TOLERANCES UNLESS OTHERWISE SPECIFIED: 0 PLC ± - 1 PLC ± - 2 PLC ± - 3 PLC ± 0.20 [.008] 4 PLC ± - ANGLES ± - FINISH SEE TABLE			NAME: MINIATURE SPRING SOCKET ASSEMBLY SERIES 2 SIZE: A2 CAGE CODE: 00779 DRAWING NO: C=50863 RESTRICTED TO: -
MATERIAL: SPRING: BeCu, QQ-C-533 EYELET: Cu, QQ-C-576			WEIGHT: - CUSTOMER DRAWING: - SCALE: 20:1 SHEET: 1 of 1 REV: Z2